

From a regional initiative
————→ to a **global leader**
in **scientific progress**



VISION

To position Latin American biomedical research as a global leader in scientific progress by opening access to cutting-edge imaging technologies, innovation, and training.

MISSION

Our mission is to connect and strengthen the Latin American bioimaging community by establishing a robust collaborative network that facilitates access to training, knowledge exchange, and research infrastructure.

PILLARS

Discovery & Innovation is the engine that powers the system. It is at the core of all that we do.

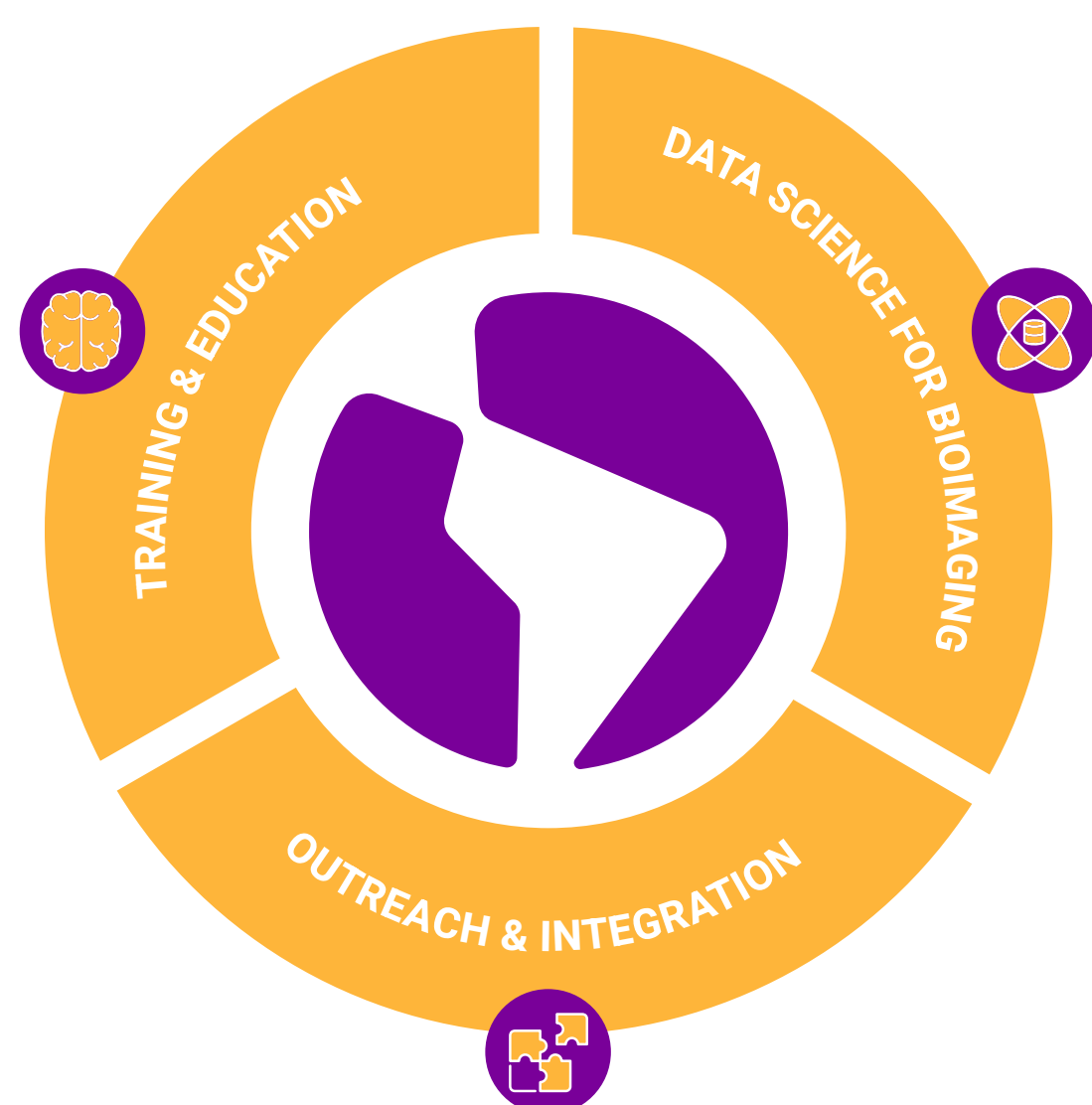
Training & Technology Dissemination and **Strengthening Bioimaging Ecosystem** act as conduits, translating innovation into actionable impact.

Global Integration is the overarching framework, ensuring LABI's influence extends worldwide.



WORKING GROUPS

We address the regional needs through collaboration in working groups



AIM

We aim to unite imaging scientists, core facility staff, technology and software developers, and biomedical researchers to address complex biological challenges using bioimaging technologies, thereby accelerating our understanding of health and disease.

LABI MEMBERS

2025

800

members in
39 countries

a large network of
Latin American members
connected worldwide

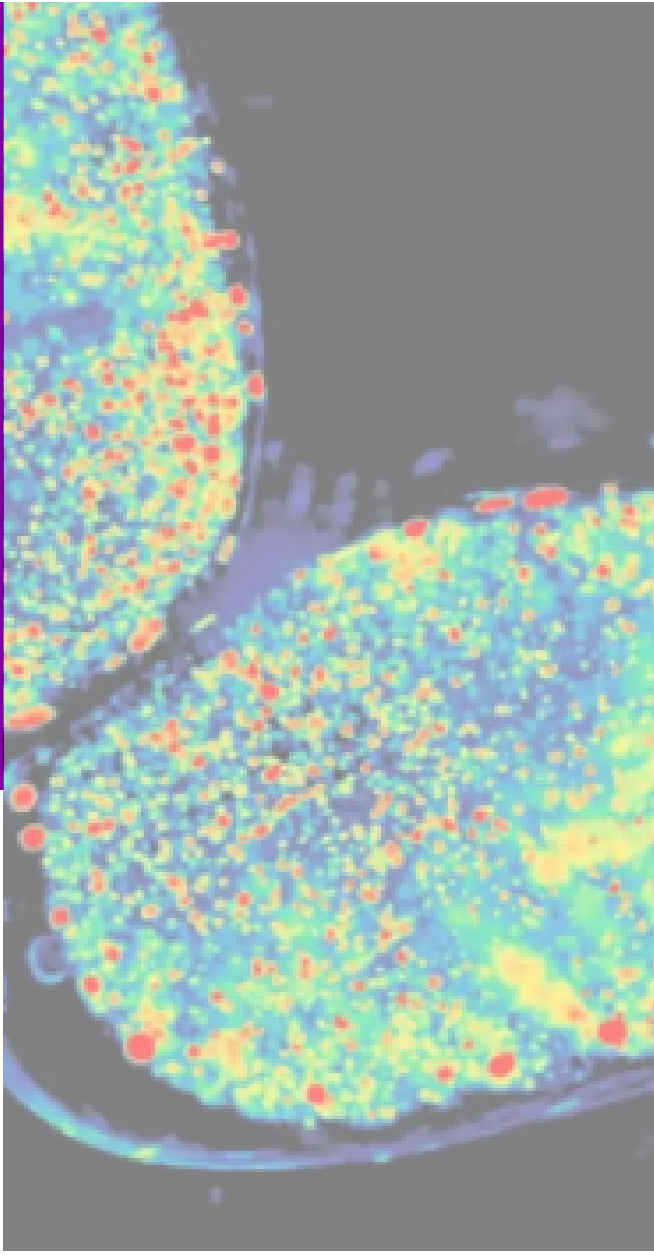
REGISTERED FACILITIES

90

Core
Facilities

We prioritize building a strong, inter-connected network that encourages knowledge-sharing and collective problem-solving across institutions and borders.

in
12
countries



TRAINING & CAREER DEVELOPMENT PROGRAMS

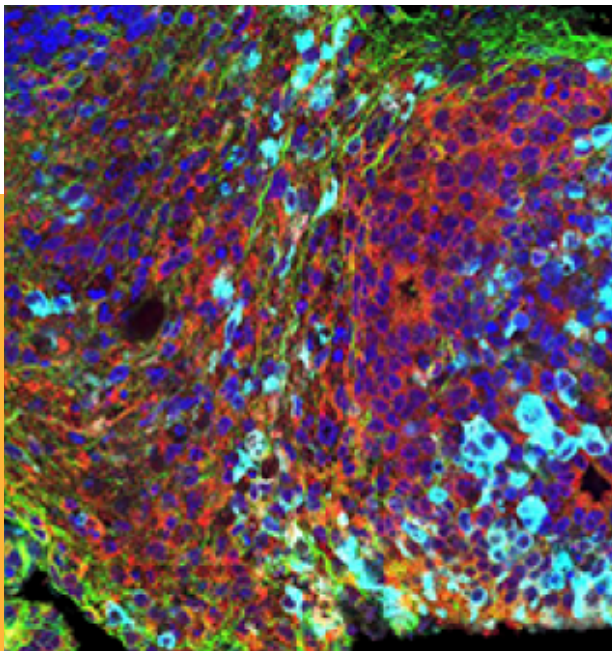
Grantees selected



As a way of promoting cooperation and fostering regional capacity building we provide access to bioimaging training and enable collaborations between imaging core facilities in Latin America.

58 Imaging science fellowships between 8 countries

REGIONAL & INTERNATIONAL INTEGRATION



We are committed to fostering cutting-edge research and the development of new technologies to push the boundaries of bioimaging.

We focus on establishing long-term solutions for bioimaging infrastructure, ensuring continuity and growth for future scientists.

We value the exchange of knowledge and collaboration with international partners to strengthen Latin America's presence and contributions to the global bioimaging community.

6 Partnership agreements



+

4 in process



HOW CAN YOU GET INVOLVED?

Actively participate

labi.lat/join

Contact us

latambioimaging@gmail.com

Follow us

linkedin.com/latambioimaging

x.com/LatamBioimaging

youtube.com/@latambioimaging

bsky.app/latambioimaging.bsky.social

instagram.com/latambioimaging



www.labi.lat